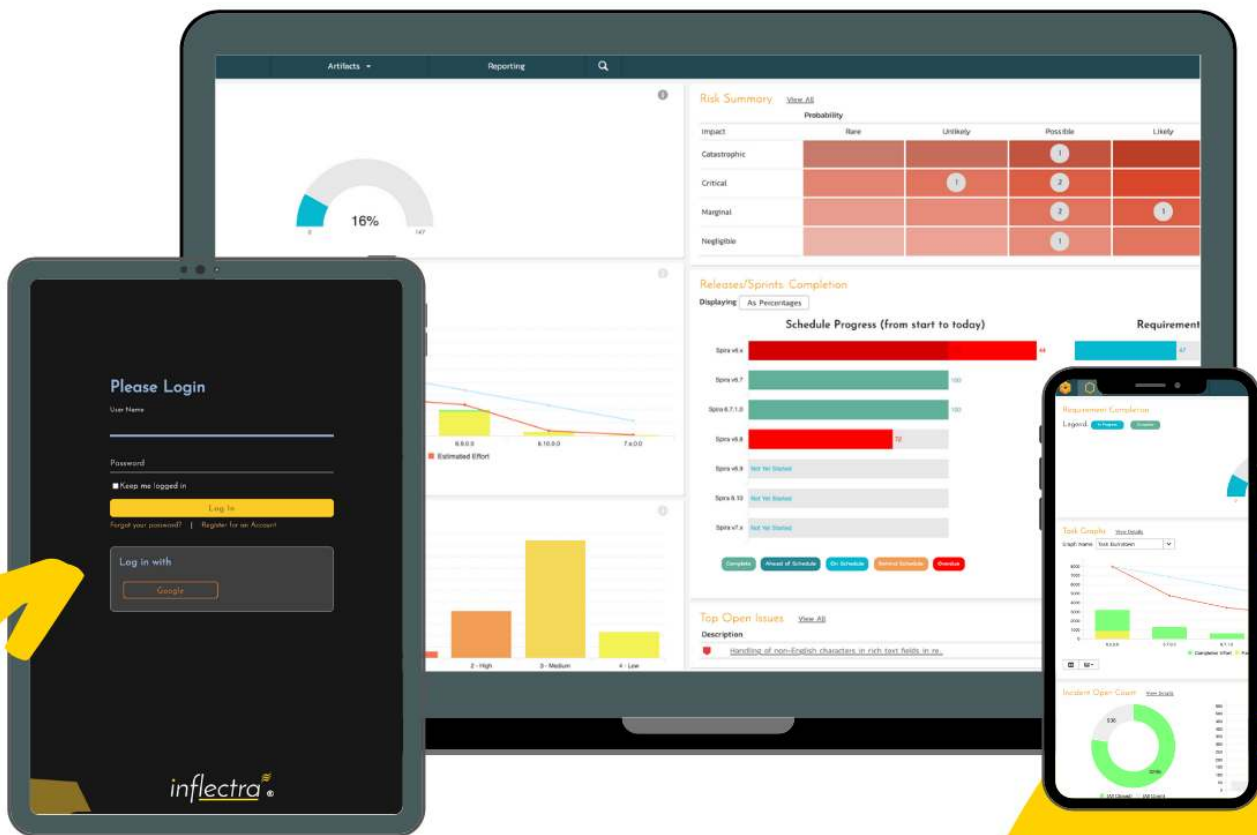


SpiraPlan

The Top Alternative to Atlassian Jira



SpiraPlan - Program & Portfolio Management for Agile Enterprises

Table Of Contents

Jira Server Discontinued	2
Jira Cloud Limitations	2
What About Jira Data Center?	2
Why Choose Spira as a Jira Alternative?	3
What is SpiraPlan?	3
SpiraPlan For All Teams	4
How SpiraPlan Brings Harmony to Jira	5
Data Synchronization with SpiraPlan	5
Program-Wide View with SpiraPlan	6
All The Features, No Hassle	7
How Does Spira Map to Jira's Ecosystem?	9
Moving Away From Jira A Webinar Recording	10
Meet Our Happy SpiraPlan Customers	11
The Inflectra Promise	12
Try SpiraPlan Now	12

Jira Server Discontinued

On February 2, 2021, Atlassian **stopped selling new server licenses** for many of their products, including Jira Software. At the same time, they **increased the price** for the remaining on-premise alternative, Jira Data Center, for which the smallest order now corresponds to ordering 500 users.

Though Atlassian will **not add any new features**, they will continue to provide bug fixes and support for these products for a bit longer. But on February 2, 2024, Atlassian will end support for **all server products**.

Jira Cloud Limitations

While Atlassian is investing in its cloud services to provide feature upgrades, that doesn't mean everyone can - or wants to - move to the cloud.

Many customers in **high assurance industries** or running projects on secure networks are unable to ever use a cloud-based solution for **regulatory, security or compliance** reasons.

In addition, Jira Cloud has known issues of its lackluster performance, inflexible data localization options and increasing **instability and unreliability** due to the [need to have many plugins installed](#) to achieve basic functionality.

What About Jira Data Center?

If you are considering a switch from Atlassian's Jira Server product to Jira Data Center, consider the following:

The Top Alternative to Atlassian Jira

- You need to order minimum 500 users. This will also affect the cost for many of the plugins you will need to use as well.
- Important new functionality, like Jira's Next-Gen Projects, will not be available.
- It is more expensive than the server product.
- It is more complicated to maintain as it consists of nodes behind a load balancer rather than a single server instance.
- Atlassian has a clear intent to move all their customers to the cloud in the longer term.

Unlike Jira and Atlassian, **Inflectra and Spira** have a **long-term commitment** to giving the customer a choice of hosting in our [secure cloud](#) (multiple data localization regions) or [self-hosting on-premise](#). We offer flexible and easy to understand licensing based on [concurrent users](#), with on-premise customers having both annual and perpetual license options. We even make the [migration from Jira](#) easy!

Why Choose Spira as a Jira Alternative?

Inflectra's customers commonly have several different tools in-house. Often they are using Jira on various projects, especially where the teams are working in Java or other non-Microsoft technologies. In addition, they will sometimes have a team using Microsoft Azure DevOps (including its new Pipelines feature) on their Microsoft projects. **They come to Inflectra to add on more powerful requirements and test case management, which is easily done using SpiraPlan, however as they start to work with our tools, they realize they can get better visibility across all their teams.**

What is SpiraPlan?

Spiraplan is Inflectra's **flagship enterprise-level portfolio management platform**. Now in its 6th version, this all-in-one solution combines the world-class test management, portfolio management, and requirements traceability features.

SpiraPlan boasts a full set of capabilities for program management, release planning, baselining, resource management, and risk analysis. With integrated executive dashboards full of critical metrics, real-time charts, customizable reports, and templates, you have a birds-eye view of your teams' progress. SpiraPlan is methodology agnostic, with support for Agile, Scrum, Kanban, Waterfall, and hybrid approaches.

SpiraPlan is designed for managing the mission-critical applications and embedded complex systems, especially in regulated industries. Therefore, it is available in a secure cloud (AWS), private cloud or as an on-premise/download option. The platform offers a whopping 60+ integrations with the legacy and as well as modern apps on the market, including Jira, Bamboo, Selenium, Git, Version One, Eclipse, Jenkins, Visual Studio, Zendesk.

SpiraPlan For All Teams

Agile

SpiraPlan includes out of the box support for popular [agile methodologies](#) such as Scrum, Kanban and Scaled Agile. With Spira you don't need separate plugins for testing, code management or project scaling, it's all available, fully integrated from day one.

DevOps

Baked into Spira are seamless integrations with Git for source code management, Jenkins (and others) for Continuous Integration and Continuous Deployment, as well as integrated DevOps features such as code collaboration & viewing.

Collaboration

SpiraPlan makes team collaboration easy, with integrated discussion threads, instant messaging, subscriptions and notifications, RSS feeds and a built-in document management system.

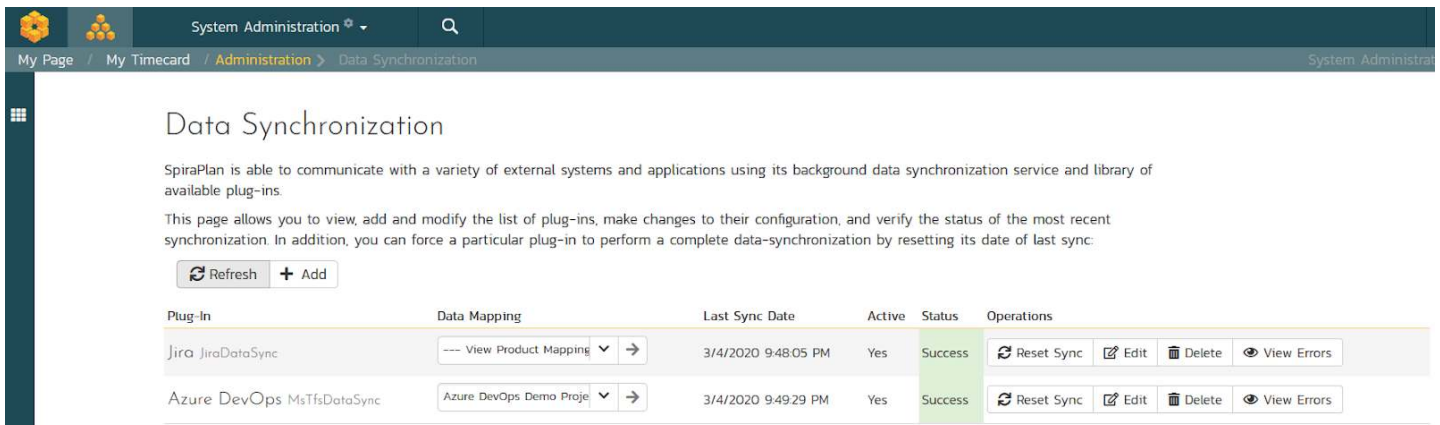
How SpiraPlan Brings Harmony to Jira

One of the [key themes at Inflectra is Harmony](#), or how Inflectra's software and products can foster harmony in the software development and testing lifecycle. One of the important ways we do this is by making it easy for teams to work in their favorite tools and have the data be available to other teams seamlessly. Many customers have teams using a combination of different Atlassian Jira instances, Microsoft Azure DevOps instances, and other tools. In this article, I will be discussing how such heterogeneous environments can benefit from SpiraPlan.

Data Synchronization with SpiraPlan

Starting with the test case management need, one of the key differentiators between SpiraPlan and other tools is that we can integrate with a [variety of different agile planning and development tools](#), including Jira (though we can also integrate with GitLab, GitHub, Redmine, Bugzilla, and a host of other products as well), whereas some competitors are limited to just being a plugin to a single tool.

This means that we can have one instance of SpiraPlan synchronize different projects with Jira or even different instances of the tool.



The screenshot shows the 'Data Synchronization' page in the SpiraPlan System Administration interface. The page title is 'Data Synchronization'. Below the title, there is a brief description: 'SpiraPlan is able to communicate with a variety of external systems and applications using its background data synchronization service and library of available plug-ins. This page allows you to view, add and modify the list of plug-ins, make changes to their configuration, and verify the status of the most recent synchronization. In addition, you can force a particular plug-in to perform a complete data-synchronization by resetting its date of last sync:'. Below the text are two buttons: 'Refresh' and '+ Add'. The main content is a table with the following columns: 'Plug-In', 'Data Mapping', 'Last Sync Date', 'Active', 'Status', and 'Operations'. There are two rows of data in the table.

Plug-In	Data Mapping	Last Sync Date	Active	Status	Operations
Jira JiraDataSync	--- View Product Mapping →	3/4/2020 9:48:05 PM	Yes	Success	Reset Sync Edit Delete View Errors
Azure DevOps MsTfsDataSync	Azure DevOps Demo Proje →	3/4/2020 9:49:29 PM	Yes	Success	Reset Sync Edit Delete View Errors

With SpiraPlan, you can see easily which projects are integrated with each of the different tools:

The Top Alternative to Atlassian Jira

Data Synchronization

SpiraPlan is able to communicate with a variety of external systems and applications using its background data synchronization service and library of available plug-ins.

This page allows you to view, add and modify the list of plug-ins, make changes to their configuration, and verify the status of the most recent synchronization. In addition, you can force a particular plug-in to perform a complete data-synchronization by resetting its date of last sync:

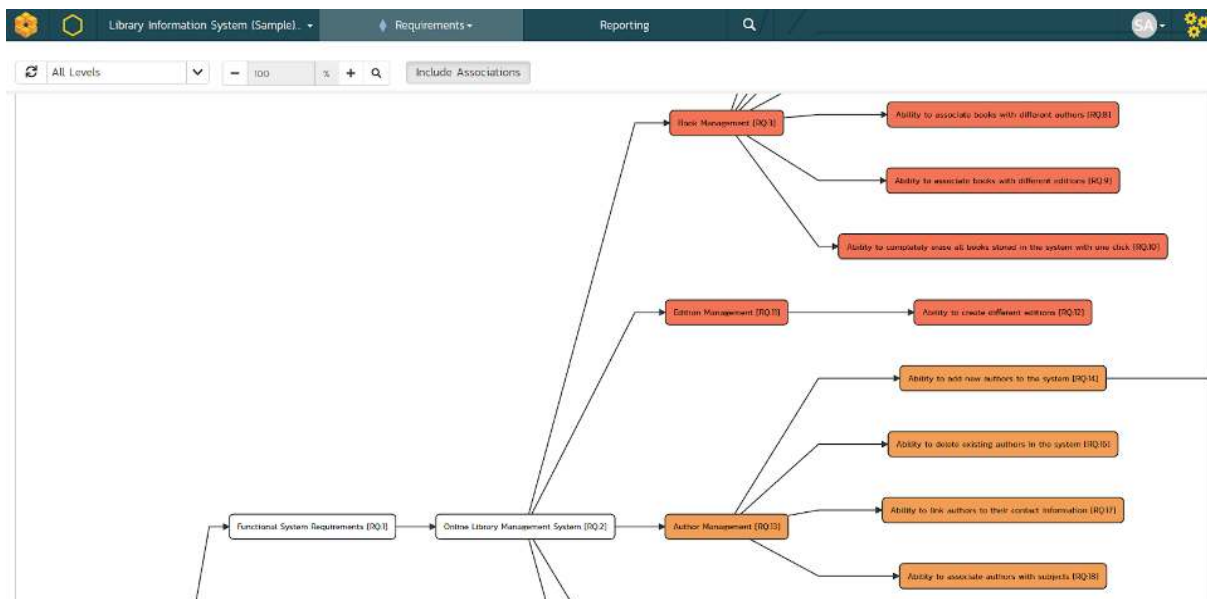
Plug-In	Data Mapping	Last Sync Date	Active	Status	Operations
Jira JiraDataSync	--- View Product Mapping ^ →	3/4/2020 9:48:05 PM	Yes	Success	<input type="button" value="Reset Sync"/> <input type="button" value="Edit"/> <input type="button" value="Delete"/> <input type="button" value="View Errors"/>
Azure DevOps MsTfsDataSync	--- View Product Mappings --- ○ Azure DevOps Demo Project ● Jira Demo Project ○ Katys Demoprojekt ○ Library Information System ○ Sample Application One ○ Sample Application Two	3/4/2020 9:49:29 PM	Yes	Success	<input type="button" value="Reset Sync"/> <input type="button" value="Edit"/> <input type="button" value="Delete"/> <input type="button" value="View Errors"/>

This means that QA teams working in SpiraPlan have a single easy-to-use interface for writing and running tests and logging defects. The defects are then automatically synchronized to the appropriate tool seamlessly without any manual intervention.

That way the different project development teams can work in Jira, and the QA and project management can have central visibility in SpiraPlan.

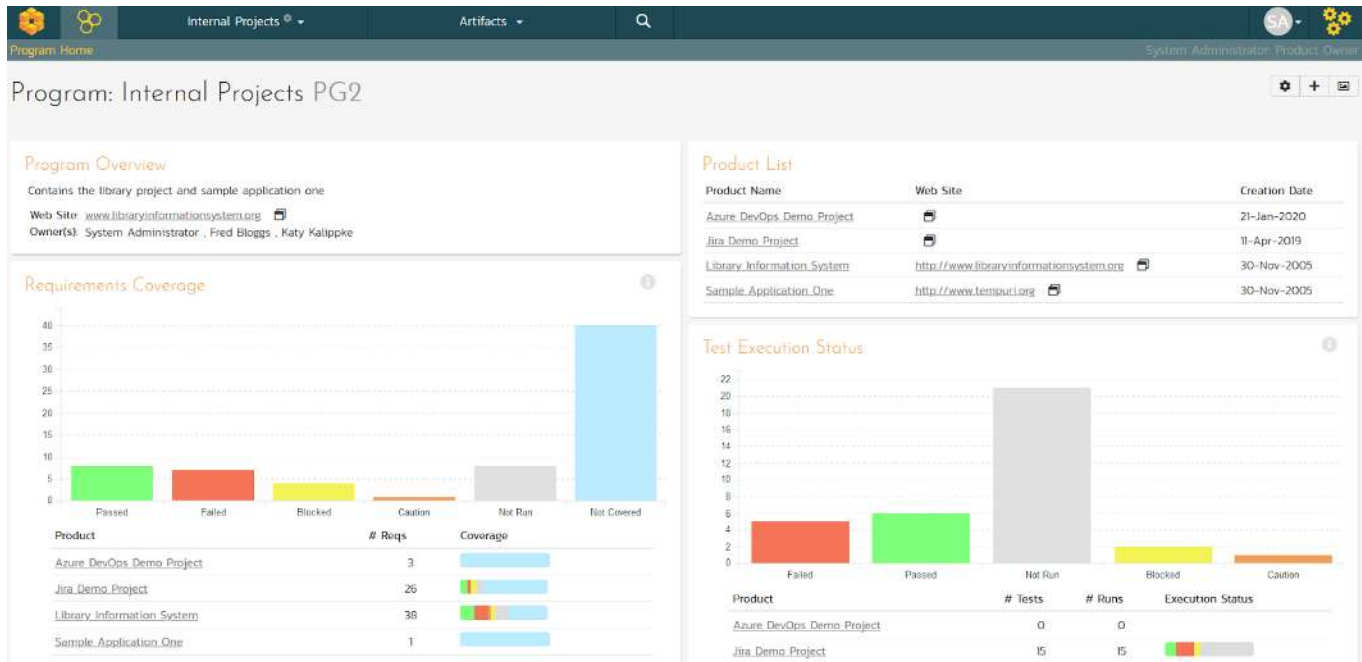
Program-Wide View with SpiraPlan

With SpiraPlan, you can have robust planning and that will let you sync user stories from Jira (or DevOps) and link those to your overarching requirements to have end to end traceability: [requirements management tools](#)



The Top Alternative to Atlassian Jira

With SpiraPlan you get access to a rich set of [program and portfolio management views](#) that you can use to aggregate the information from your Jira projects into a single executive dashboard:



All The Features, No Hassle

Issue Tracking

Spira has a powerful and flexible [issue tracking](#) system that supports configurable issue types, statuses, priorities, and custom workflows. No code, no fuss.

Time Tracking

Spira includes work estimation, [resource management](#), reporting and time tracking available out of the box without any third-party plugins needed.

Test Management

At the heart of Spira is our world-class [test management](#) system that provides best-in-industry support for manual, automated testing and test traceability.

Reporting & BI

Spira provides you with [real-time reporting](#) of all your development, testing, and project activities. Includes integrated executive dashboards and a custom reporting engine.

How Does Spira Map to Jira's Ecosystem?

Product Feature	Atlassian	SpiraPlan®
Project Management Features		
Portfolio Management	Jira Software + Portfolio ()	✓
Program Management & Roadmaps	Jira Software + Portfolio ()	✓
Project Estimation & Management	Jira Software + Agile	✓
Release/Sprint Planning	Jira Software + Agile	✓
Issue Tracking	Jira Core	✓
Task Management	Jira Software	✓
Project Baselines		✓
Risk Management		✓
Resource Management	Tempo Planner ()	✓
Time Tracking	Tempo Timesheets ()	✓
Agile & DevOps Features		
Requirements Management	Structure () RM for Jira (RM4J) ()	✓
Test Management	Zephyr () XRAY () TM4J ()	✓
Automated Testing	Tempo Planner ()	✓
Scrum Boards	Jira Software + Agile	✓
Kanban Boards	Jira Software + Agile	✓
Source Code (Git) Integration	Bitbucket () Git Integration for Jira ()	✓

The Top Alternative to Atlassian Jira

Build Management	Bitbucket ()	✓
Collaboration Features		
Document Management	Documents for Jira () Structure ()	✓
Wikis and Content Management	Confluence ()	✓
Instant Messenger (IM)		✓
Reporting & BI Features		
Executive Dashboards		✓
Customizable Graphing	EasyBI ()	✓
Customizable Report Generation	EasyBI ()	✓

Moving Away From Jira | A Webinar Recording



Meet Our Happy SpiraPlan Customers

Customer Testimonial

“

Great product for managing your software development projects. When evaluating solutions, it became clear to me that the choice would be SpiraPlan. For the price to feature ratio, it could do everything and more than we would need. With the ability to just add additional licenses as our team grew it provided the flexibility we needed. The support team at Inflectra is also top notch. Any time I had a question/issue, they were there to help in a quick and friendly manner.

Brian Kratsch, Tolko Industries Ltd.

Trusted By Industry Leaders



The Inflectra Promise

Easy To Migrate

It's super easy to switch to our tools. Migrate your legacy data, documents, spreadsheets, and more. (Don't worry, we also have a ton of ways to export your data.)

Free Trials

No credit cards, no contracts, no hassles. You can trial all of our products in the cloud or on your own servers, and all for a generous thirty days.

Service You'll Love

Best practices baked into every product, dozens of integrations, common sense options, first-class support every time. That's what our customers love about working with us.

Try SpiraPlan Now

[Request a demo](#)